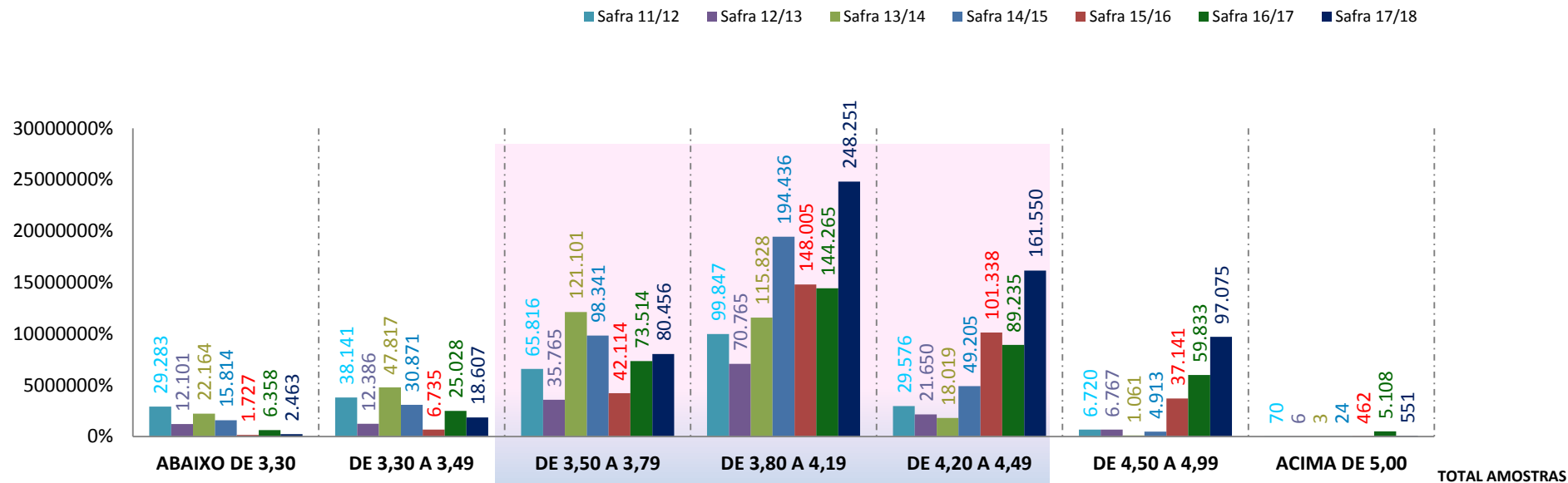


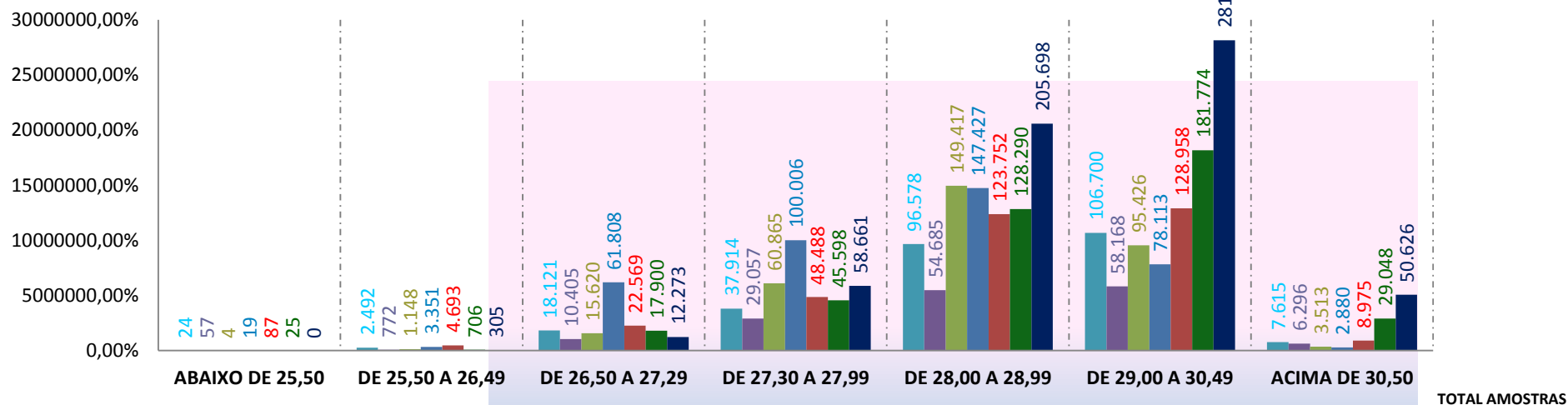
MICRONAIRE (MIC)



Safra	ABAIXO DE 3,30	DE 3,30 A 3,49	DE 3,50 A 3,79	DE 3,80 A 4,19	DE 4,20 A 4,49	DE 4,50 A 4,99	ACIMA DE 5,00	TOTAL AMOSTRAS
Safra 11/12	29.283	38.141	65.816	99.847	29.576	6.720	70	269.453
Safra 12/13	12.101	12.386	35.765	70.765	21.650	6.767	6	159.440
Safra 13/14	22.164	47.817	121.101	115.828	18.019	1.061	3	325.993
Safra 14/15	15.814	30.871	98.341	194.436	49.205	4.913	24	393.604
Safra 15/16	1.727	6.735	42.114	148.005	101.338	37.141	462	337.522
Safra 16/17	6.358	25.028	73.514	144.265	89.235	59.833	5.108	403.341
Safra 17/18	2.463	18.607	80.456	248.251	161.550	97.075	551	608.953

COMPRIMENTO (LEN)

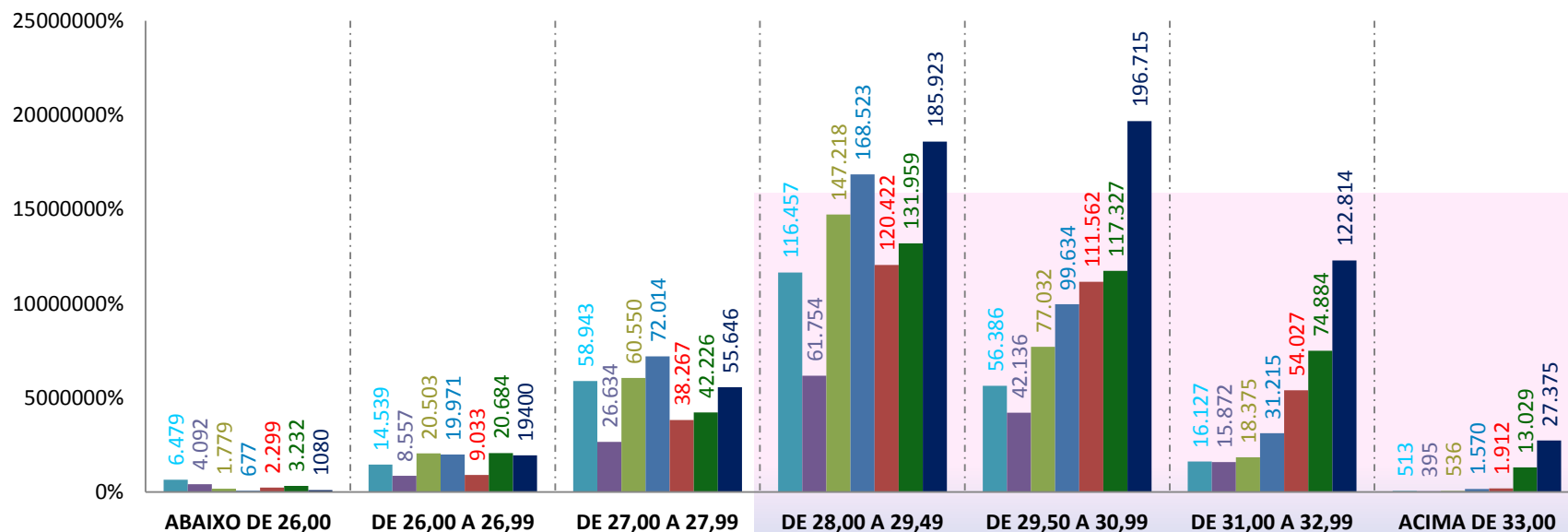
■ Safra 11/12 ■ Safra 12/13 ■ Safra 13/14 ■ Safra 14/15 ■ Safra 15/16 ■ Safra 16/17 ■ Safra 17/18



Safra	ABAIXO DE 25,50	DE 25,50 A 26,49	DE 26,50 A 27,29	DE 27,30 A 27,99	DE 28,00 A 28,99	DE 29,00 A 30,49	ACIMA DE 30,50	TOTAL AMOSTRAS
Safra 11/12	24	2.492	18.121	37.914	96.578	106.700	7.615	269,44
Safra 12/13	57	772	10.405	29.057	54.685	58.168	6.296	159,44
Safra 13/14	4	1.148	15.620	60.865	149.417	95.426	3.513	325.993
Safra 14/15	19	3.351	61.808	100.006	147.427	78.113	2.880	393.604
Safra 15/16	87	4.693	22.569	48.488	123.752	128.958	8.975	337.522
Safra 16/17	25	706	17.900	45.598	128.290	181.774	29.048	403.341
Safra 17/18	0	305	12.273	58.661	205.698	281.390	50.626	608953

RESISTÊNCIA (STR)

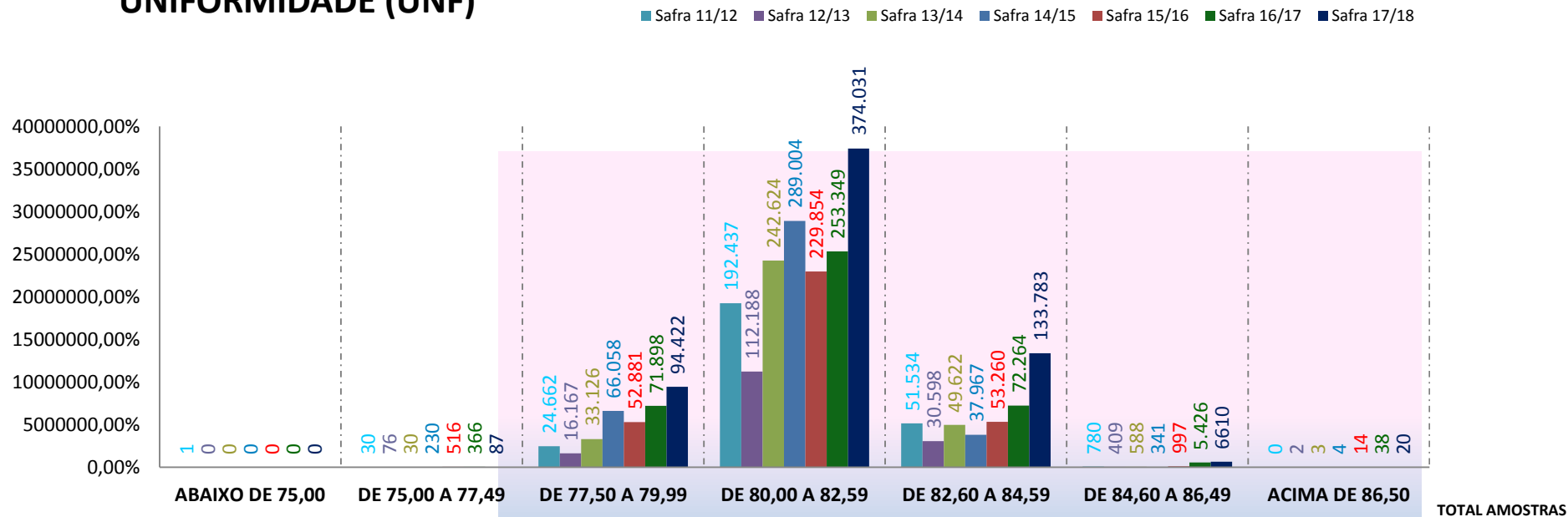
■ Safra 11/12 ■ Safra 12/13 ■ Safra 13/14 ■ Safra 14/15 ■ Safra 15/16 ■ Safra 16/17 ■ Safra 17/18



TOTAL AMOSTRAS

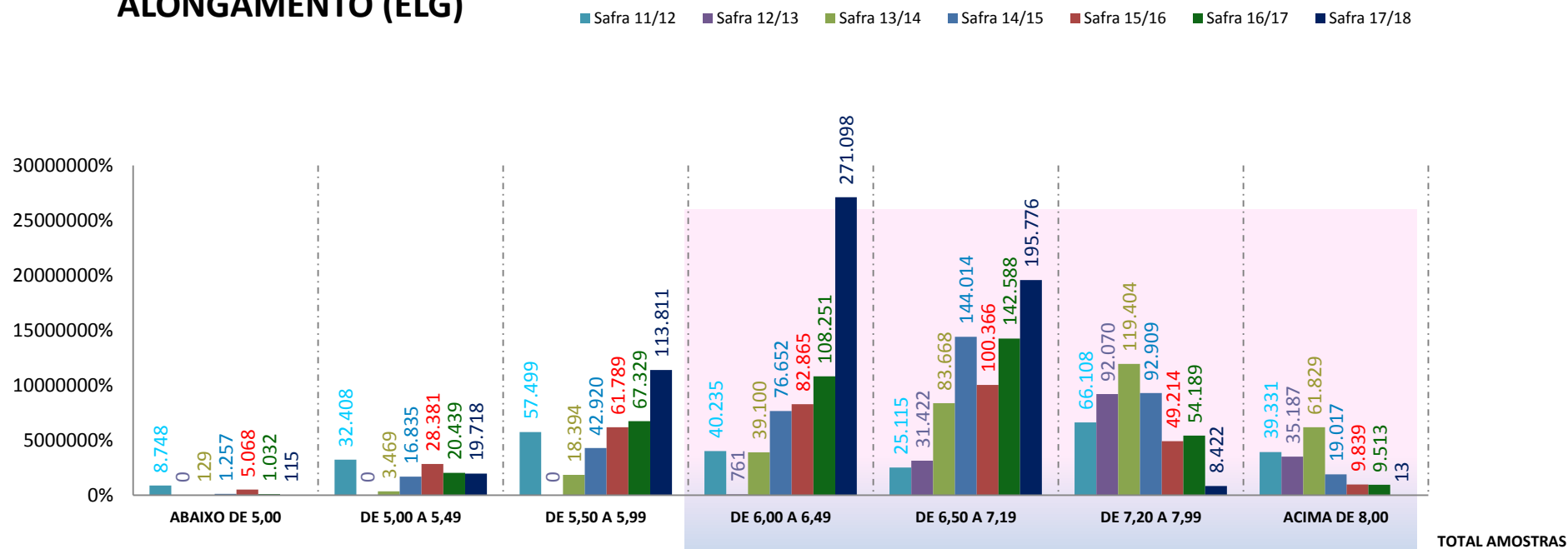
Safra	ABAIXO DE 26,00	DE 26,00 A 26,99	DE 27,00 A 27,99	DE 28,00 A 29,49	DE 29,50 A 30,99	DE 31,00 A 32,99	ACIMA DE 33,00	TOTAL AMOSTRAS
Safra 11/12	6.479	14.539	58.943	116.457	56.386	16.127	513	269,444
Safra 12/13	4.092	8.557	26.634	61.754	42.136	15.872	395	159,440
Safra 13/14	1.779	20.503	60.550	147.218	77.032	18.375	536	325.993
Safra 14/15	677	19.971	72.014	168.523	99.634	31.215	1.570	393.604
Safra 15/16	2.299	9.033	38.267	120.422	111.562	54.027	1.912	337.522
Safra 16/17	3.232	20.684	42.226	131.959	117.327	74.884	13.029	403.341
Safra 17/18	1080	19400	55.646	185.923	196.715	122.814	27.375	608953

UNIFORMIDADE (UNF)



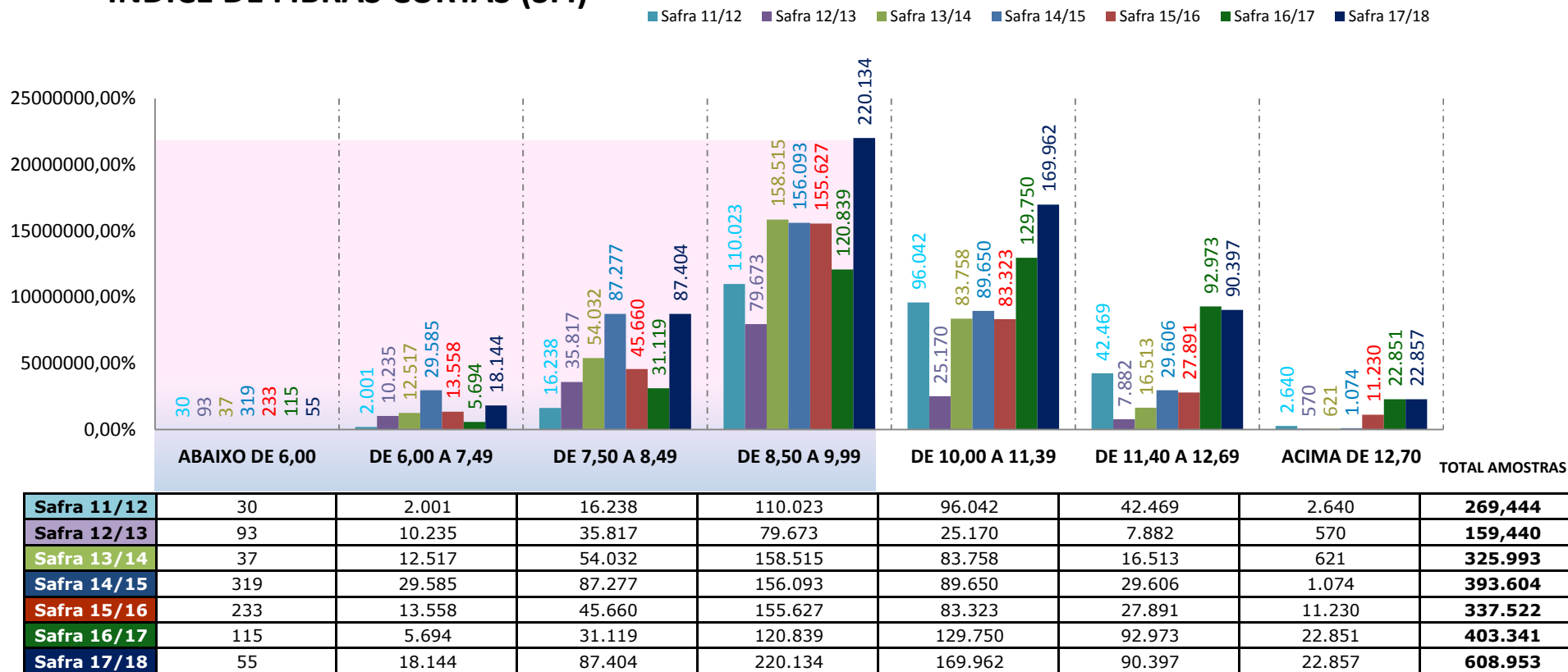
Safra	ABAIXO DE 75,00	DE 75,00 A 77,49	DE 77,50 A 79,99	DE 80,00 A 82,59	DE 82,60 A 84,59	DE 84,60 A 86,49	ACIMA DE 86,50	TOTAL AMOSTRAS
Safra 11/12	1	30	24.662	192.437	51.534	780	0	269,444
Safra 12/13	0	76	16.167	112.188	30.598	409	2	159,440
Safra 13/14	0	30	33.126	242.624	49.622	588	3	325.993
Safra 14/15	0	230	66.058	289.004	37.967	341	4	393.604
Safra 15/16	0	516	52.881	229.854	53.260	997	14	337.522
Safra 16/17	0	366	71.898	253.349	72.264	5.426	38	403.341
Safra 17/18	0	87	94.422	374.031	133.783	6610	20	608953

ALONGAMENTO (ELG)



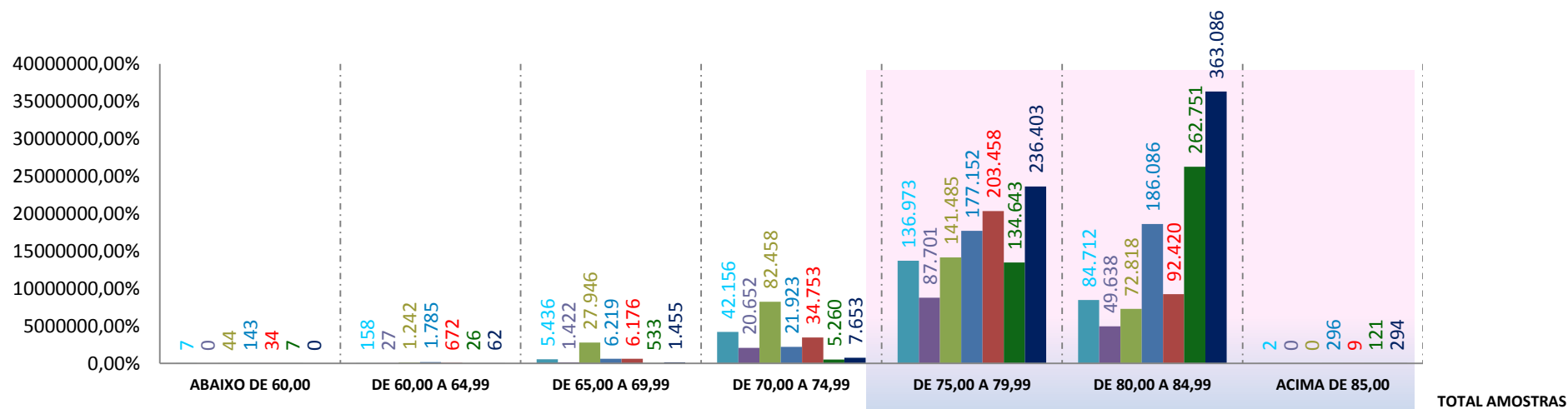
Safra	ABAIXO DE 5,00	DE 5,00 A 5,49	DE 5,50 A 5,99	DE 6,00 A 6,49	DE 6,50 A 7,19	DE 7,20 A 7,99	ACIMA DE 8,00	TOTAL AMOSTRAS
Safra 11/12	8.748	32.408	57.499	40.235	25.115	66.108	39.331	269,444
Safra 12/13	0	0	0	761	31.422	92.070	35.187	159,440
Safra 13/14	129	3.469	18.394	39.100	83.668	119.404	61.829	325.993
Safra 14/15	1.257	16.835	42.920	76.652	144.014	92.909	19.017	393.604
Safra 15/16	5.068	28.381	61.789	82.865	100.366	49.214	9.839	337.522
Safra 16/17	1.032	20.439	67.329	108.251	142.588	54.189	9.513	403.341
Safra 17/18	115	19.718	113.811	271.098	195.776	8.422	13	608.953

ÍNDICE DE FIBRAS CURTAS (SFI)



GRAU DE REFLECTÂNCIA (RD)

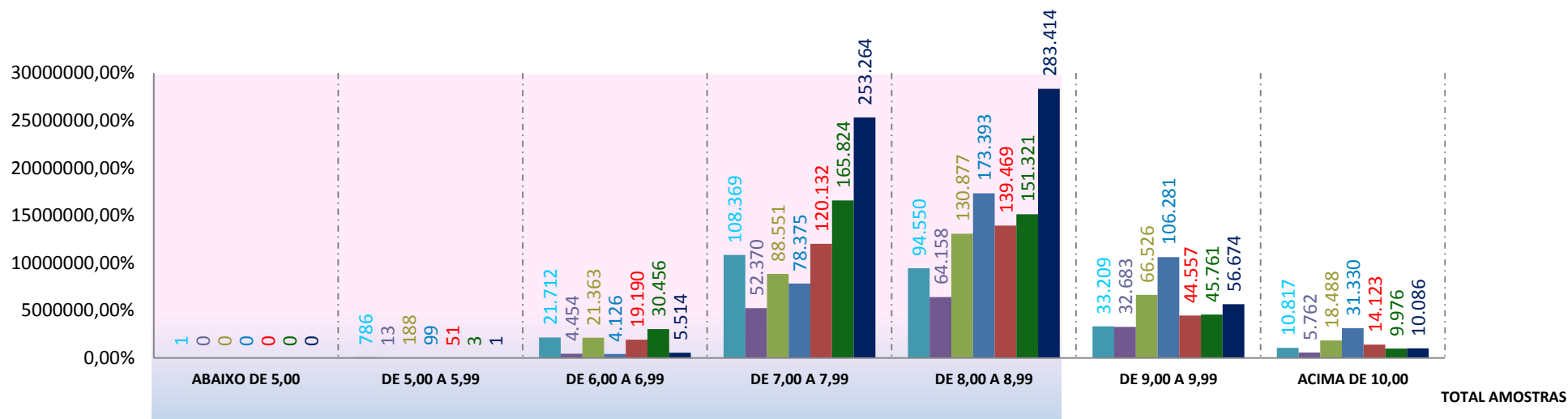
■ Safra 11/12 ■ Safra 12/13 ■ Safra 13/14 ■ Safra 14/15 ■ Safra 15/16 ■ Safra 16/17 ■ Safra 17/18



Safra	ABAIXO DE 60,00	DE 60,00 A 64,99	DE 65,00 A 69,99	DE 70,00 A 74,99	DE 75,00 A 79,99	DE 80,00 A 84,99	ACIMA DE 85,00	TOTAL AMOSTRAS
Safra 11/12	7	158	5.436	42.156	136.973	84.712	2	269.444
Safra 12/13	0	27	1.422	20.652	87.701	49.638	0	159.440
Safra 13/14	44	1.242	27.946	82.458	141.485	72.818	0	325.993
Safra 14/15	143	1.785	6.219	21.923	177.152	186.086	296	393.604
Safra 15/16	34	672	6.176	34.753	203.458	92.420	9	337.522
Safra 16/17	7	26	533	5.260	134.643	262.751	121	403.341
Safra 17/18	0	62	1.455	7.653	236.403	363.086	294	608.953

GRAU DE AMARELAMENTO (+B)

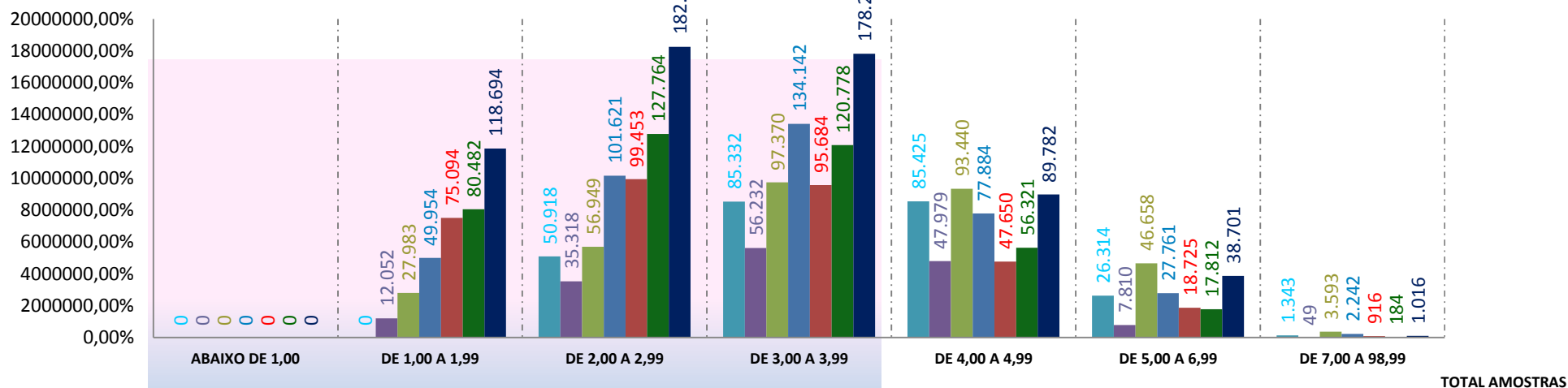
■ Safra 11/12 ■ Safra 12/13 ■ Safra 13/14 ■ Safra 14/15 ■ Safra 15/16 ■ Safra 16/17 ■ Safra 17/18



Safra	ABAIXO DE 5,00	DE 5,00 A 5,99	DE 6,00 A 6,99	DE 7,00 A 7,99	DE 8,00 A 8,99	DE 9,00 A 9,99	ACIMA DE 10,00	TOTAL AMOSTRAS
Safra 11/12	1	786	21.712	108.369	94.550	33.209	10.817	269,444
Safra 12/13	0	13	4.454	52.370	64.158	32.683	5.762	159,440
Safra 13/14	0	188	21.363	88.551	130.877	66.526	18.488	325,993
Safra 14/15	0	99	4.126	78.375	173.393	106.281	31.330	393,604
Safra 15/16	0	51	19.190	120.132	139.469	44.557	14.123	337,522
Safra 16/17	0	3	30.456	165.824	151.321	45.761	9.976	403,341
Safra 17/18	0	1	5.514	253.264	283.414	56.674	10.086	608,953

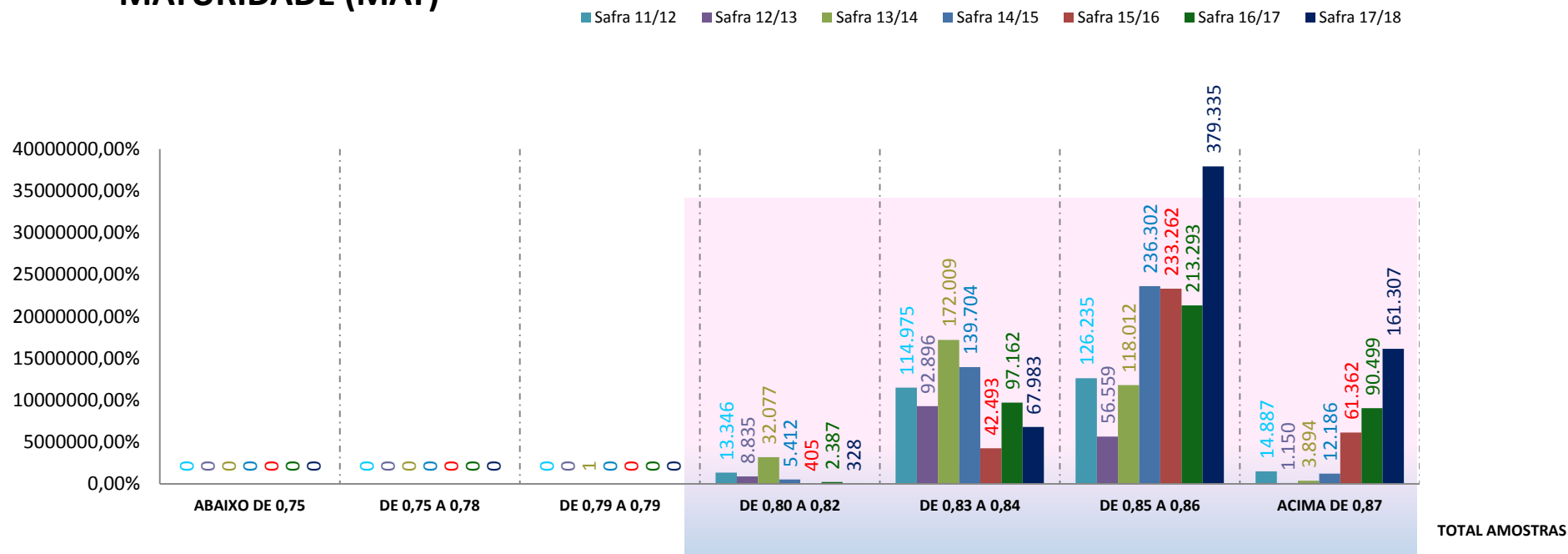
GRAU DE FOLHA (LEAF)

■ Safra 11/12 ■ Safra 12/13 ■ Safra 13/14 ■ Safra 14/15 ■ Safra 15/16 ■ Safra 16/17 ■ Safra 17/18



Safra	ABAIXO DE 1,00	DE 1,00 A 1,99	DE 2,00 A 2,99	DE 3,00 A 3,99	DE 4,00 A 4,99	DE 5,00 A 6,99	DE 7,00 A 98,99	TOTAL AMOSTRAS
Safra 11/12	0	20.11	50.918	85.332	85.425	26.314	1.343	269,444
Safra 12/13	0	12.052	35.318	56.232	47.979	7.810	49	159,440
Safra 13/14	0	27.983	56.949	97.370	93.440	46.658	3.593	325.993
Safra 14/15	0	49.954	101.621	134.142	77.884	27.761	2.242	393.604
Safra 15/16	0	75.094	99.453	95.684	47.650	18.725	916	337.522
Safra 16/17	0	80.482	127.764	120.778	56.321	17.812	184	403.341
Safra 17/18	0	118.694	182.556	178.204	89.782	38.701	1.016	608.953

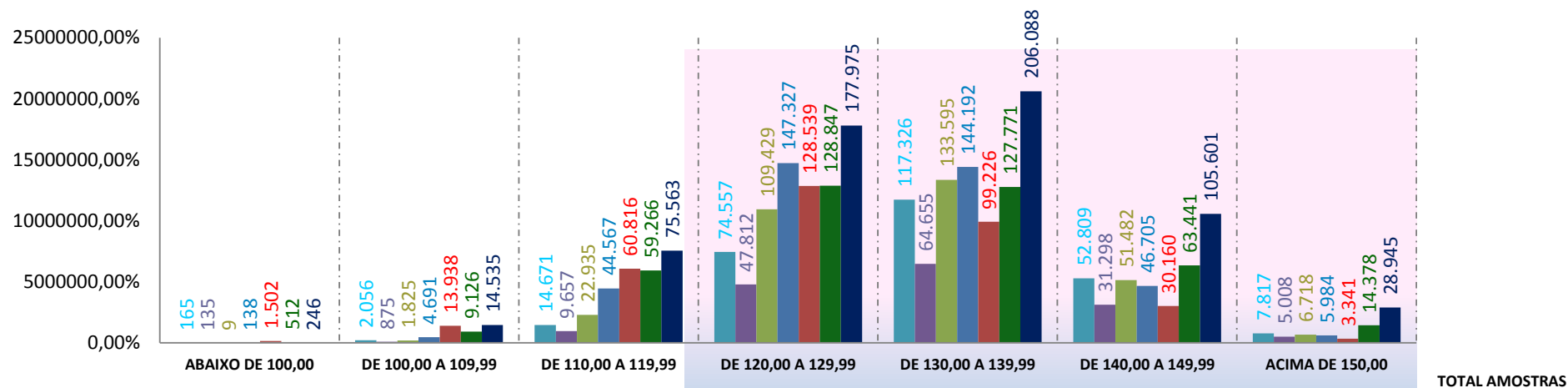
MATURIDADE (MAT)



Matéria	ABAIXO DE 0,75	DE 0,75 A 0,78	DE 0,79 A 0,79	DE 0,80 A 0,82	DE 0,83 A 0,84	DE 0,85 A 0,86	ACIMA DE 0,87	TOTAL AMOSTRAS
Safra 11/12	0	0	0	13.346	114.975	126.235	14.887	269,444
Safra 12/13	0	0	0	8.835	92.896	56.559	1.150	159,440
Safra 13/14	0	0	1	32.077	172.009	118.012	3.894	325.993
Safra 14/15	0	0	0	5.412	139.704	236.302	12.186	393.604
Safra 15/16	0	0	0	405	42.493	233.262	61.362	337.522
Safra 16/17	0	0	0	2.387	97.162	213.293	90.499	403.341
Safra 17/18	0	0	0	328	67.983	379.335	161.307	608953

ÍNDICE DE FIABILIDADE (SCI)

■ Safra 11/12 ■ Safra 12/13 ■ Safra 13/14 ■ Safra 14/15 ■ Safra 15/16 ■ Safra 16/17 ■ Safra 17/18



Safra	ABAIXO DE 100,00	DE 100,00 A 109,99	DE 110,00 A 119,99	DE 120,00 A 129,99	DE 130,00 A 139,99	DE 140,00 A 149,99	ACIMA DE 150,00	TOTAL AMOSTRAS
Safra 11/12	165	2.056	14.671	74.557	117.326	52.809	7.817	269,444
Safra 12/13	135	875	9.657	47.812	64.655	31.298	5.008	159,440
Safra 13/14	9	1.825	22.935	109.429	133.595	51.482	6.718	325,994
Safra 14/15	138	4.691	44.567	147.327	144.192	46.705	5.984	393,604
Safra 15/16	1.502	13.938	60.816	128.539	99.226	30.160	3.341	337,522
Safra 16/17	512	9.126	59.266	128.847	127.771	63.441	14.378	403,341
Safra 17/18	246	14.535	75.563	177.975	206.088	105.601	28.945	608,953